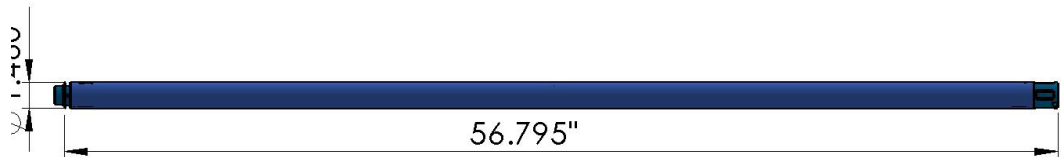
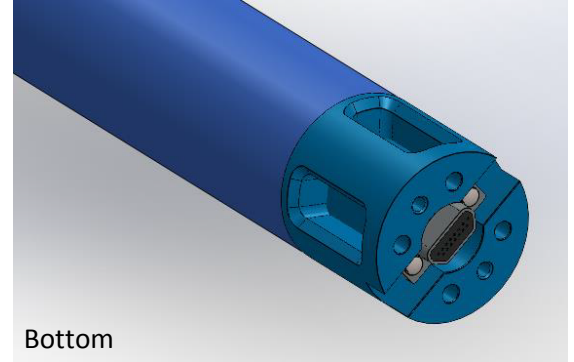
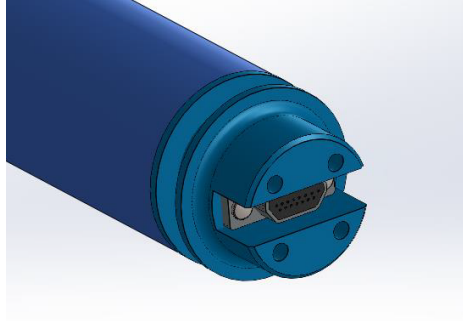


APS TECH

Battery Specifications



Battery Voltage:	36 Volts
Battery Capacity:	15 - 29Ah (actual value depends on the type of cell and temperature rating)
Battery Ends:	Top: 15 Pin Male MDM Floating Bottom: 15 Pin Male MDM Floating
Temperature Range:	150°C - 180°C
Cell Type:	Moderate Rate/High Rate DD

***Optional BOLT**

BOLT is one of the most precise battery monitors on the market today that measures voltage, current, temperature, shock and vibration both laterally and axially.